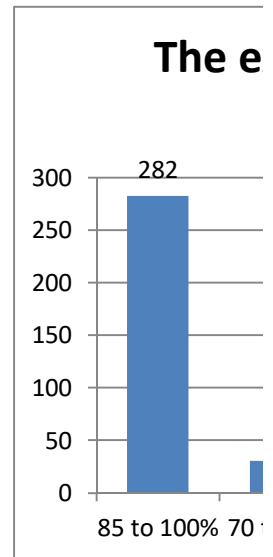


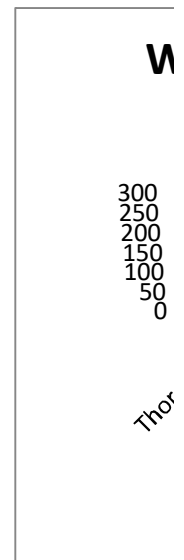
1. The extent of the syllabus covered in the class.

%	85 to 100%	70 to 84%	55 to 69%	30 to 54%	Below 30%
total no. of stude	282	30	25	15	10

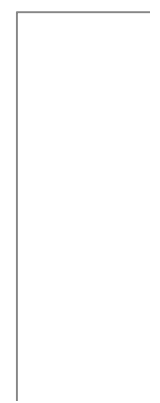


2. Whether the teacher prepares for the class?

Responses	Thoroughly Satisfactori	Poorly	Indifferent	Won't teach at all
total no. of stude	288	40	5	2



3. How effectively the teacher interacts with you?

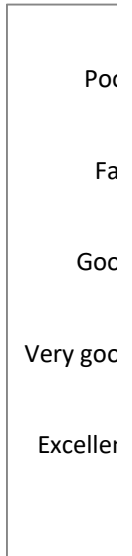


Responses	Always eff	Sometimes	Just satisf	Generally i	Very poor communication
total no. of stude	267	60	20	5	3



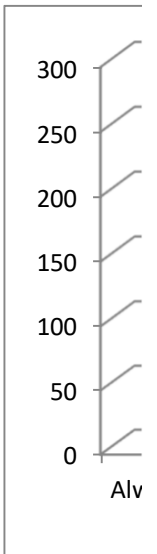
4. A Teacher passion of teaching expressed as such?

Responses	total no. of students
Excellent	244
Very good	65
Good	25
Fair	16
Poor	5

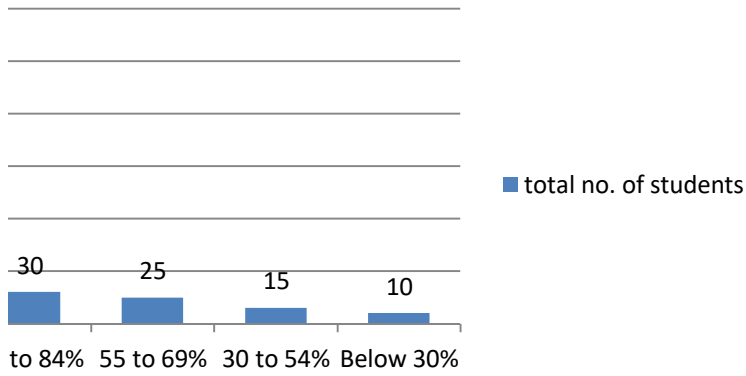


5. How frequently the teacher follows justifiable internal assessments?

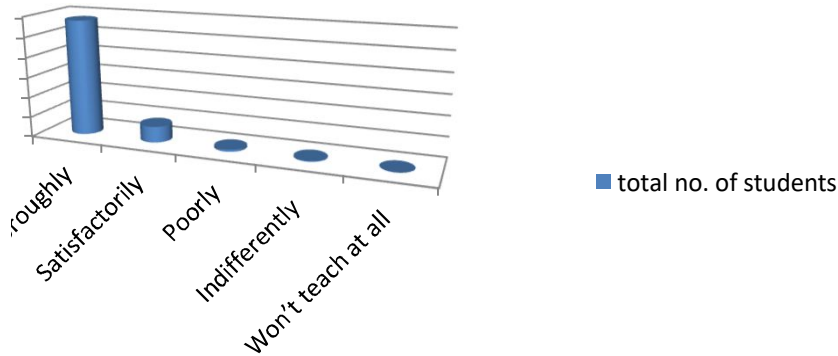
Responses	Strength
Always fair	298
Usually fair	50
Sometimes unfair	4
Usually unfair	3
Unfair	0



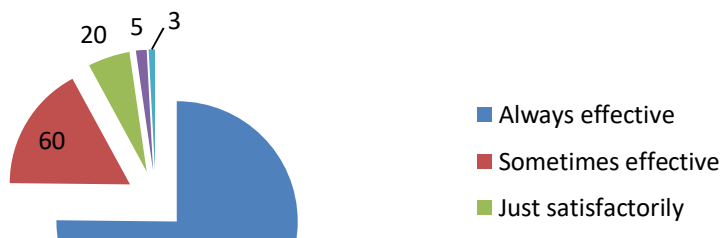
Extent of the syllabus covered in the class



Whether the teacher prepares for the class?

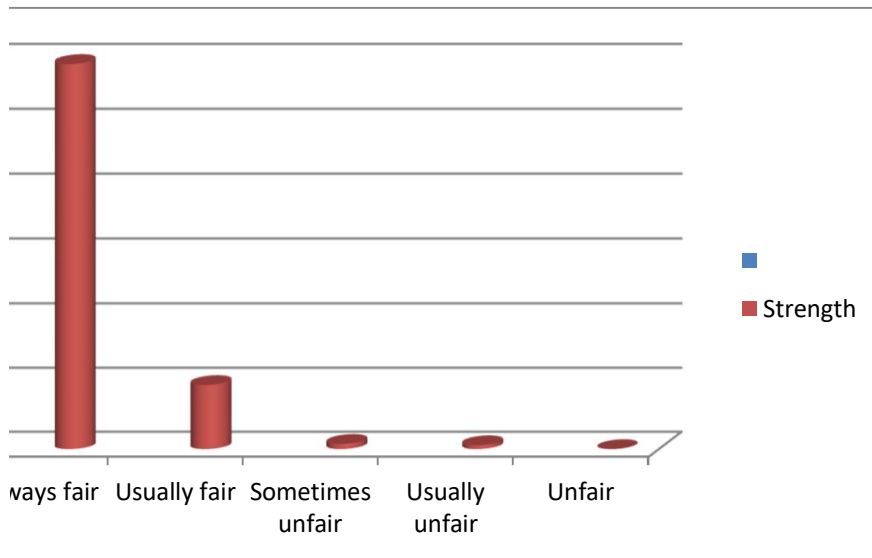
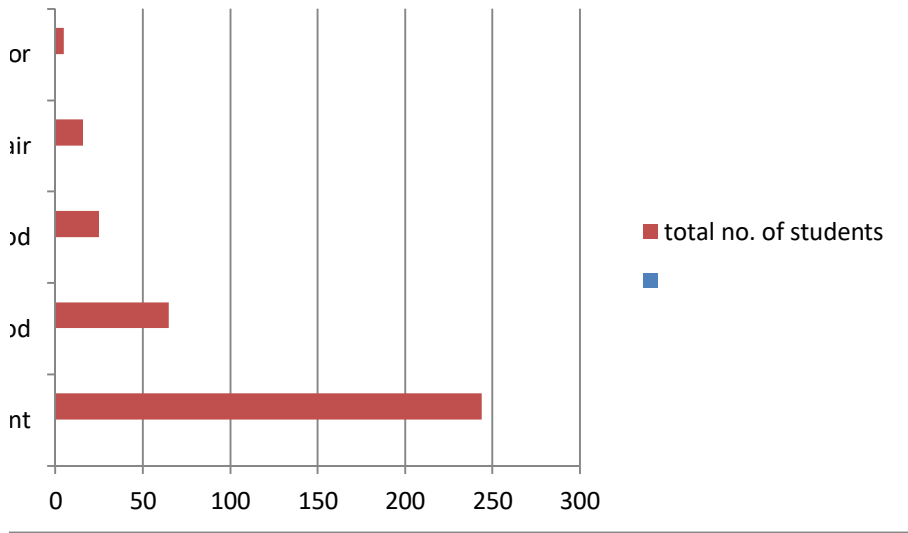


How effectively the teacher interacts with you?



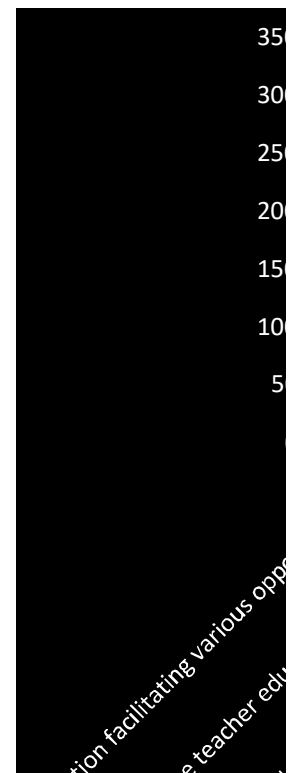


- Generally ineffective
- Very poor communication



Questions	No. of students positive response
extent of the syllabus covered	330
teacher prepares for the class	315
teacher interacts with you	325
Teacher passion of teaching	300
teacher follows justifiable internal assessments	312
teachers consult your progress with regards to assignme	315
the institution conducts leadership, student exchange ar	250
the teaching and mentoring process in the institute pror	220

Questions	No. of students positive response
institution facilitating various opportunities to learn and	300
the teacher educates you about expected competencies	285
regularly your mentor investigates about the task assign	330
teachers exhibit the views through applicability of exam	310
the teacher find your caliber and motivate you to get the	250
the teacher finds your deficiency weaknesses and guide:	320
the monitoring, review and continuous quality improve	290



Questions

the institute/ teachers follow student are centric metho
the teachers inspire you to engage in extracurricular act
the institute/ teacher implants soft skills, life skills & em
teachers use ICT tools such as LCD projector, Multimedia
the overall of Teaching Learning process

No. of students positive response

295
325
322
335
335

